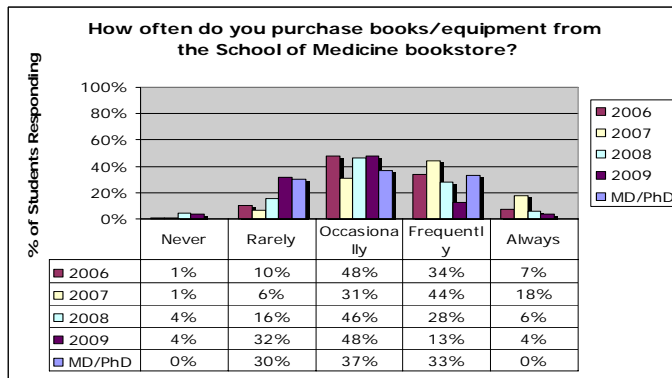
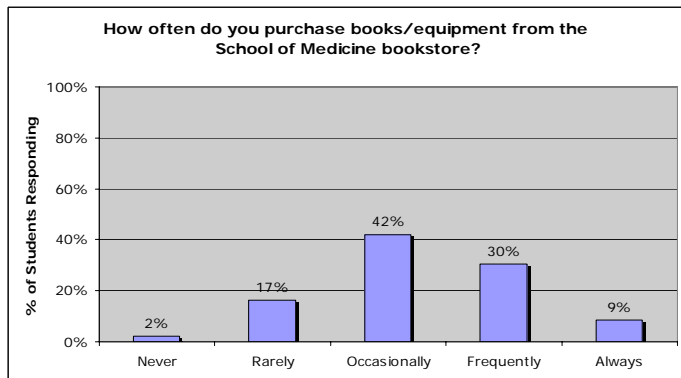


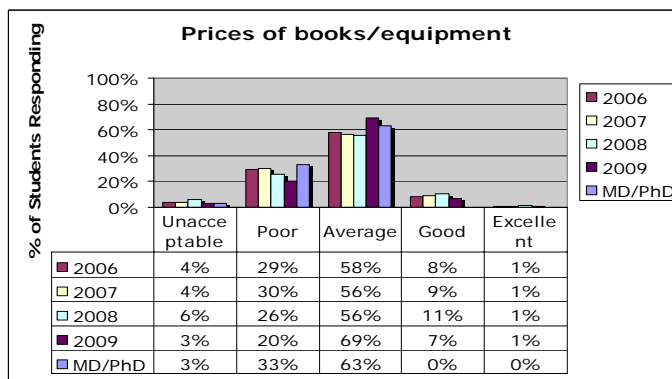
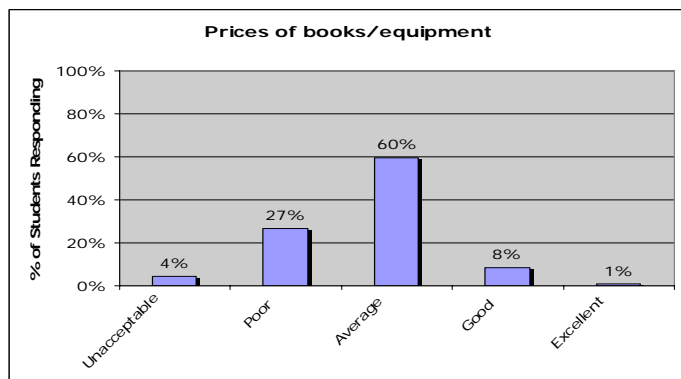
School of Medicine Bookstore

Please rate the following characteristics of the NYU SoM bookstore:

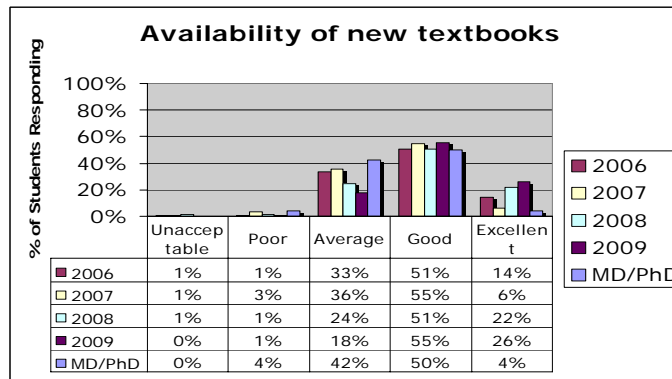
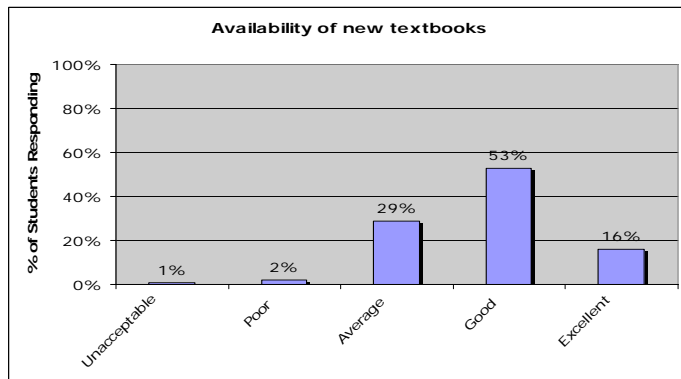
13-1. How often do you purchase books/equipment from the School of Medicine bookstore?
n = 557



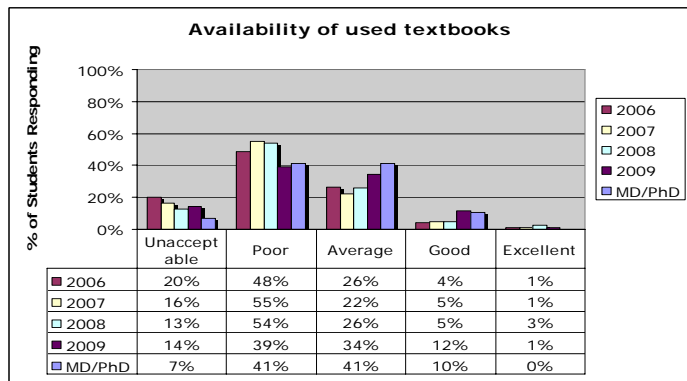
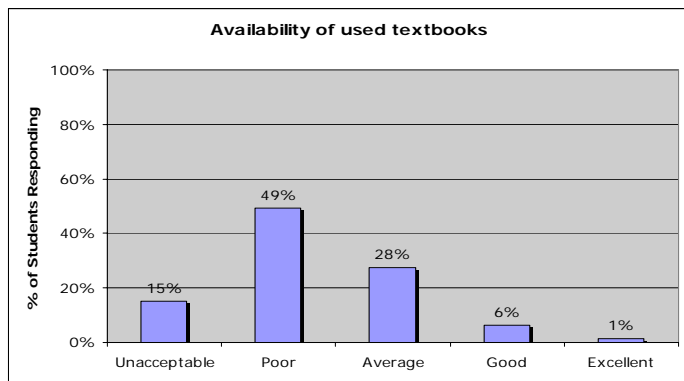
13-2. Prices of books/equipment
n = 554



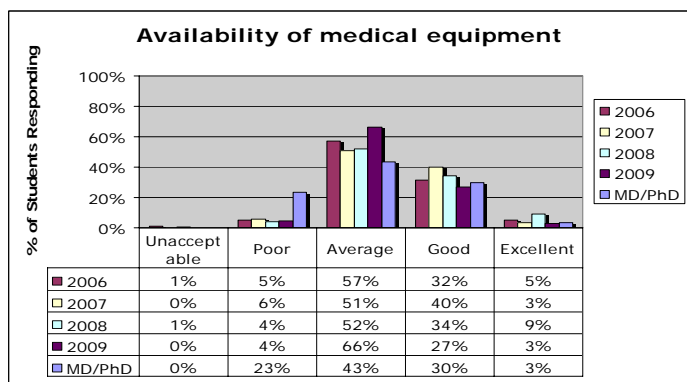
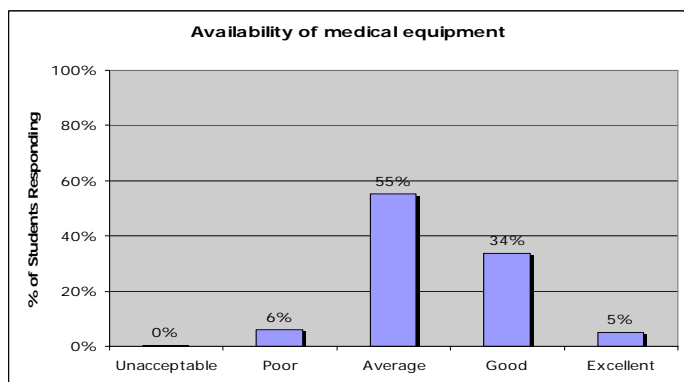
13-3. Availability of new textbooks
n = 553



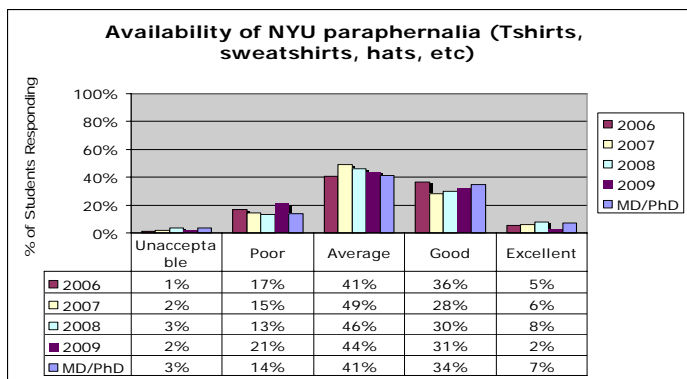
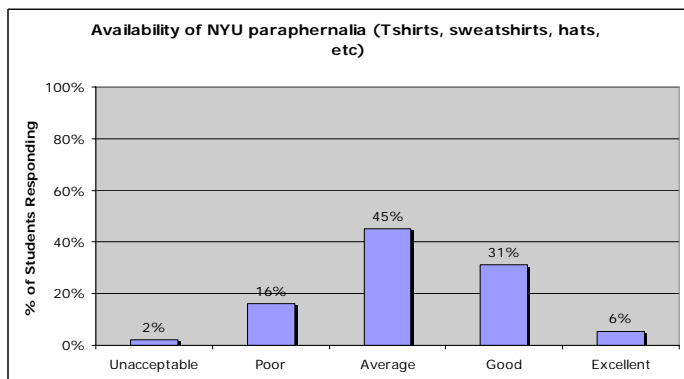
13-4. Availability of used textbooks
n = 543



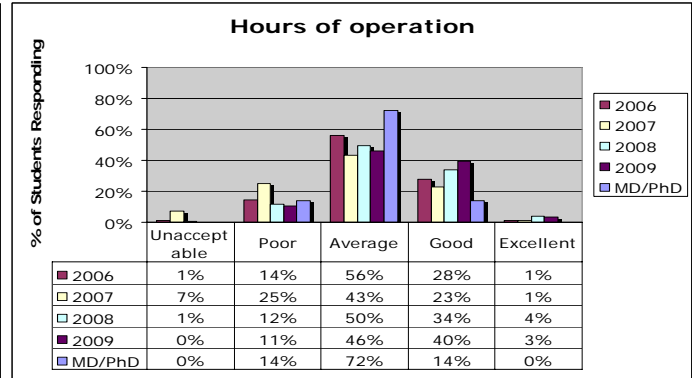
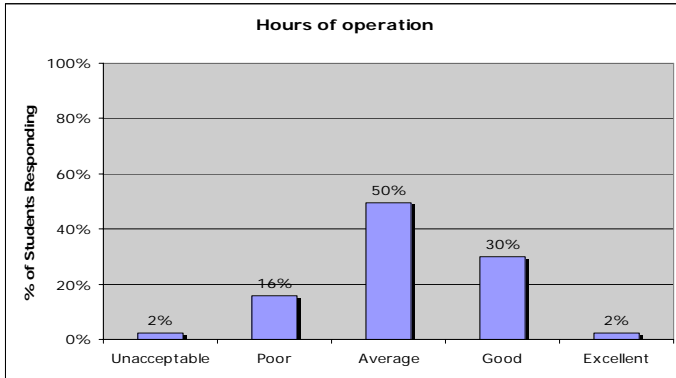
13-5. Availability of medical equipment
n = 537



13-6. Availability of NYU paraphernalia (Tshirts, sweatshirts, hats, etc)
n = 543



13-7. Hours of operation
n = 545



13-8. Location
n = 553

